

Featured Speaker

Jim Ross began working on his family's genealogy in



2007. When he retired from the IT department at BJC HealthCare after more than thirty-six years, he was finally able to dedicate more time to finding his great-grandfather's birthplace in Ireland. (Still searching!)

A long-time RootsMagic user since 2016, Jim enjoys exploring how emerging technologies—especially AI and large language models—can enhance genealogical research. He has a special knack for helping people who aren't comfortable with technology feel confident using new software and websites.

We want you to be successful! Before you come, please be sure to:

- Attend or watch at least one AI webinar or demo (You can find Jim's February 2025 AI presentation at: <https://stlgs.org/events/meetings/monthly-meeting>)
- Spend at least an hour experimenting with ChatGPT or similar AI model



St. Louis Genealogical Society

4 Sunnen Drive, Suite 140

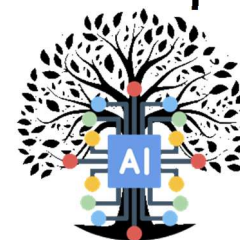
St. Louis, Missouri 63143

<https://stlgs.org>



St. Louis Genealogical Society

Exploring AI for Genealogy: A Hands-on Experience



**Featuring Jim Ross
StLGS co-webmaster**

Learn to use AI tools with your own documents, questions, and photos. Short demos will be followed by guided practice. You'll leave with skills, not just ideas.

Hands-on activities include:

- Asking better questions for better results
- Analyzing, translating, and summarizing old documents
- Generating research plans, timelines, and case studies
- Analyzing and interpreting old photos

Saturday, 27 September 2025

9:00 a.m.–3:00 p.m.

at the StLGS Office

4 Sunnen Drive, Suite 140

St. Louis, Missouri 63143

PROGRAM

Artificial intelligence is changing how we do genealogy—and you don't need to be tech-savvy to take advantage of it. Join us for a day-long workshop, filled with short lectures, live demonstrations, and guided hands-on activities!

Come prepared:

- Bring your laptop (either Mac or PC) and power cord (sorry, not a tablet or smart phone), a selection of digital documents and photos. and an electronic copy of your family tree.
- Sign up for a ChapGPT Plus subscription (\$20/month) and be able to log on from your laptop. (Be sure to have your password!)

Know how to:

- Copy/paste text between windows and apps
- Navigate between multiple tabs and apps
- Find and manage files on your computer
- Log into websites and email on any computer

Space is limited: register now!



SCHEDULE

Our day's schedule is flexible; this is approximate.

9:00 a.m.	Set up/Log on
Morning:	<i>Intro to AI in Genealogy</i>
	<i>Learn to Ask Good Questions</i>
	<i>Working with Photos and Documents</i>
12:15–1:15	Lunch
Afternoon:	<i>Using AI for Deep Research</i>
	<i>Individualized Projects</i>

AI FOR GENEALOGY REGISTRATION FORM

Name: _____

Address: _____

City, State, Zip: _____

Phone: _____ Email: _____

REGISTRATION

Before 17 Sept. StLGS Member \$50 Non-member \$60 _____

18 Sept. & after StLGS Member \$60 Non-member \$70 _____

StLGS Membership: Adult: \$40/\$45 w. paper *Quarterly* _____

Family Membership: \$45/\$50 w. paper *Quarterly* _____

Optional box lunch from McAlister's Deli* \$15 _____

Donation _____

Total _____

LUNCH PREFERENCE *

(ONLY IF PURCHASING LUNCH, CHECK ONE: SANDWICH OR SALAD)

☐ Roast Beef ☐ Ham ☐ Turkey ☐ Chef's Salad

☐ Gluten Free ☐ Dairy Free

(Coffee/Tea/Water provided; feel free to bring your own snacks.)

FORM OF PAYMENT

Check _____ OR Discover _____ Visa _____ MasterCard _____

Card Number _____ Expiration Date _____

Card Security Code (3-digit number on the back) _____

Make checks payable and mail registration to

St. Louis Genealogical Society

4 Sunnen Dr., Suite 140, St. Louis, MO 63143

OR register on the website <https://stlgs.org>