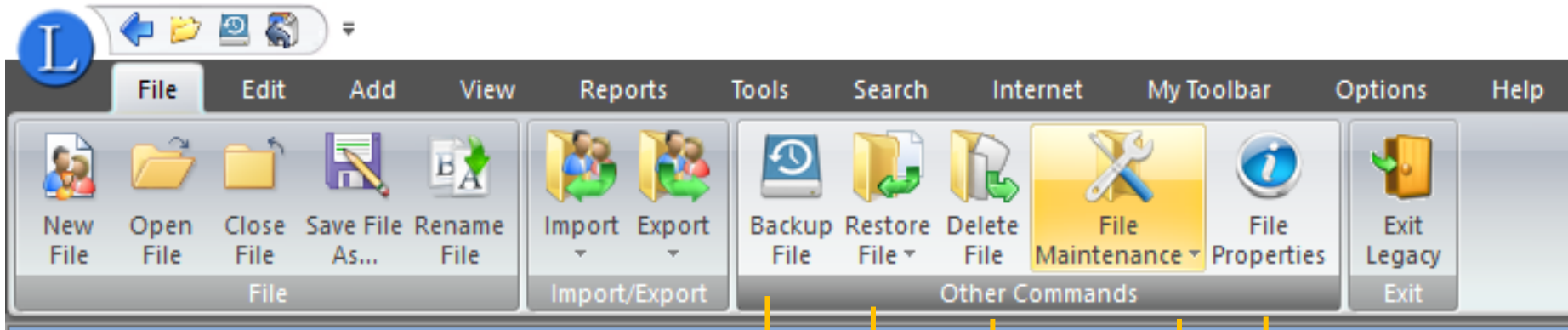


LEGACY RIBBON BAR



FILE TAB

- GEDCOM file
- PAF 2.31 or Ancestral Quest 2 File
- PAF 3,4,5 or Ancestral Quest 3 File
- The Master Genealogist File
- Use Import Wizard to help with any import

- GEDCOM File
- Export to a new Legacy Family File

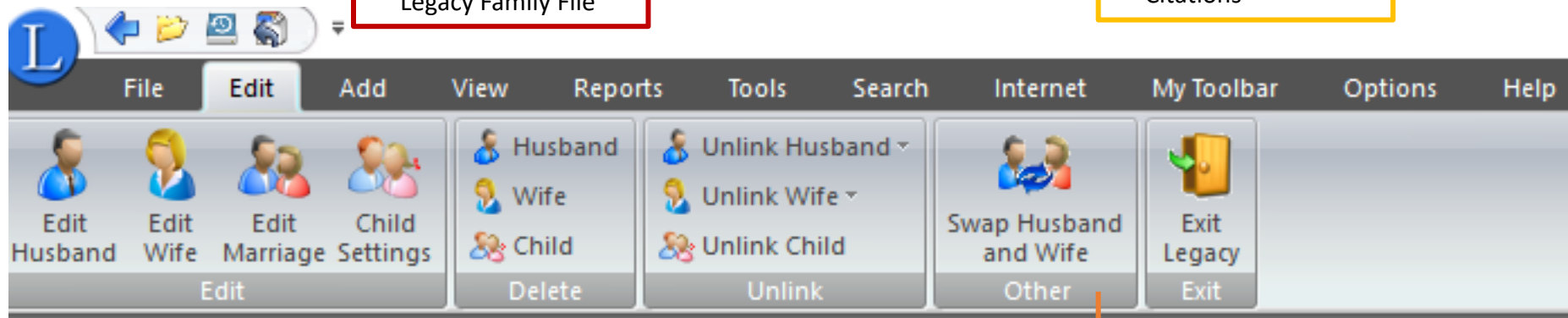
Make a backup copy of current family file

- Delete current family file

- Restore a previously backed up family file

- Version
- Customer Number
- File Folder
- Statistic Summary

- Check Repair
- List Cleanup
- Compact Family File
- Set Starting Order
- Rebuild Source Citations

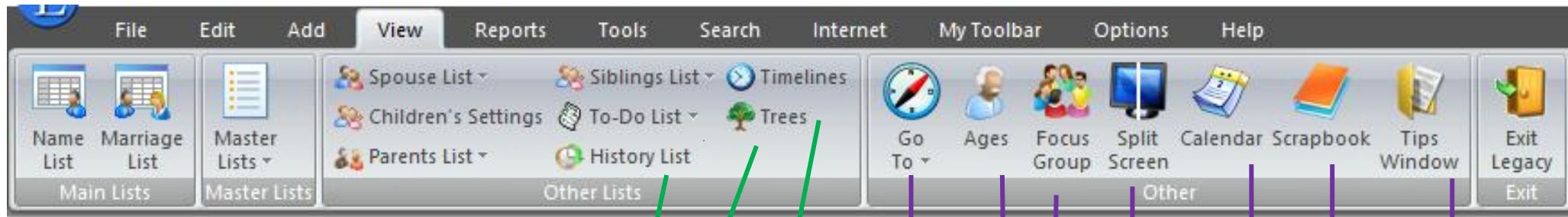


EDIT TAB

Change the position of the husband and wife



ADD TAB



VIEW TAB

Display a list of everyone in the family file

Display a list of all the marriages in the family file

- Address Lists
- Child-Parent Relationship
- Child Status
- Event Definition
- Hashtags
- Marriage Status
- Media Folder List
- Source
- Source Type
- Surname
- To-Do Category
- To-Do Locality

Displays a list of the last 200 individuals you have viewed

Generate a list of all the separate unconnected groups in your family file

Create a Timeline Chart of your ancestor

- Individual
- Marriage
- Relationship starting person
- Preferred startup family

Display a list of ages at vital events

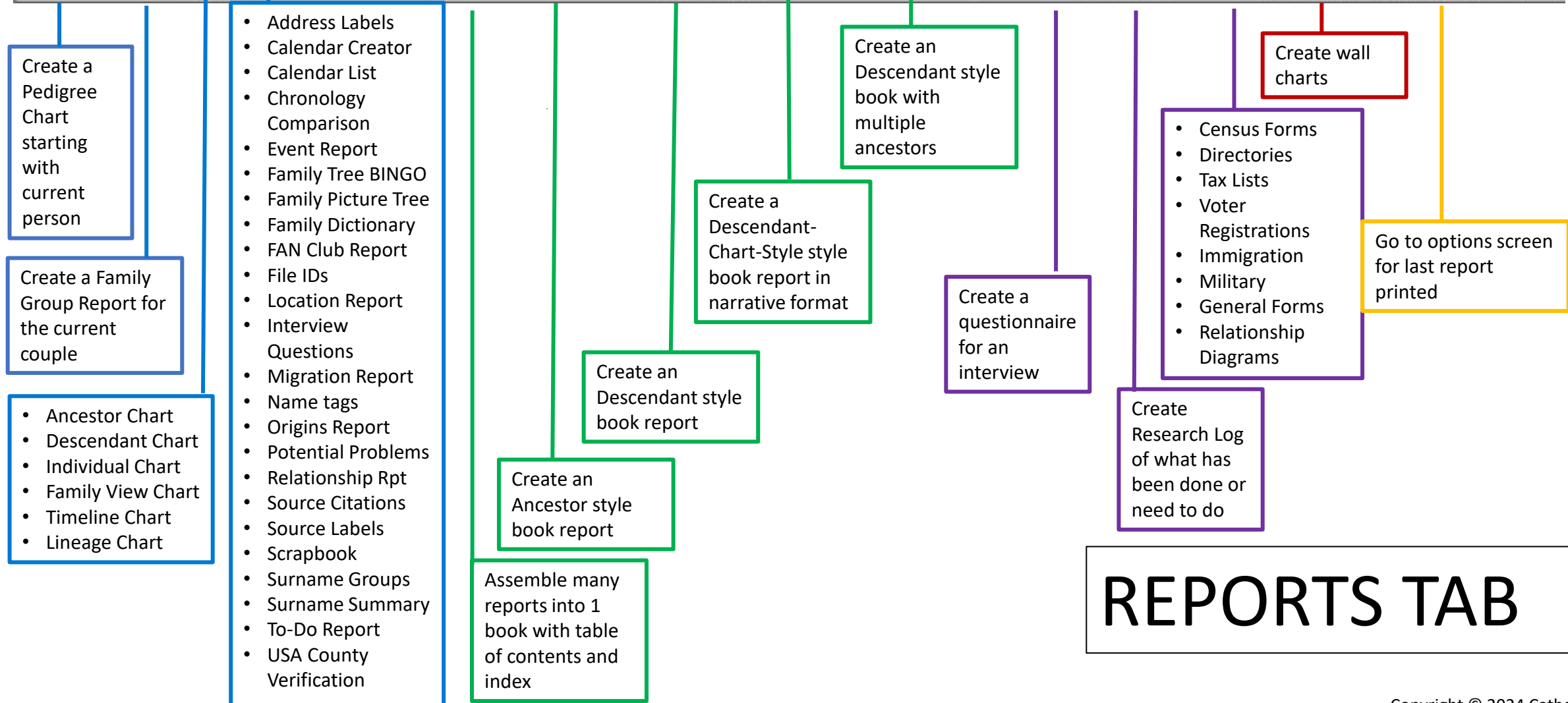
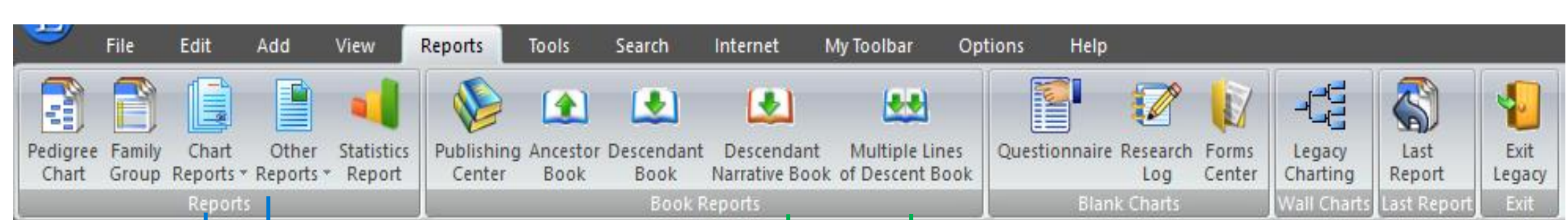
Add or edit a Focus Group

View two part of one family file or two different family files

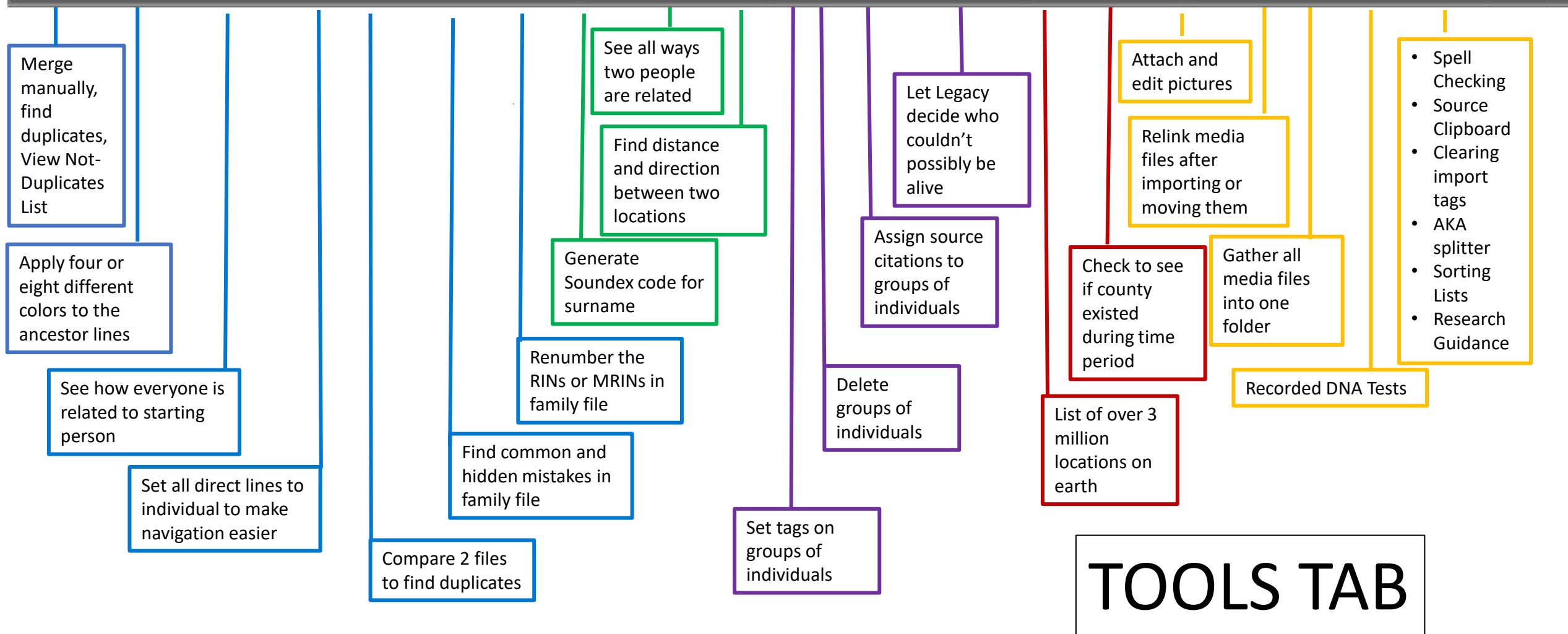
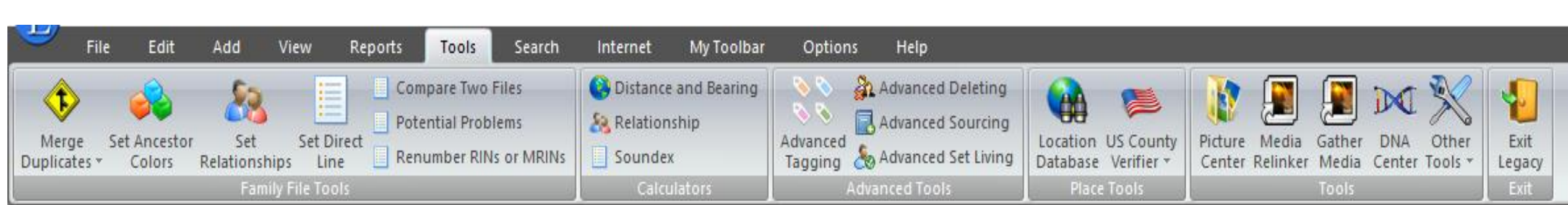
- Month, year calendars
- Date Calculator

See or create scrapbook from media linked to individuals or marriages

Legacy Tips



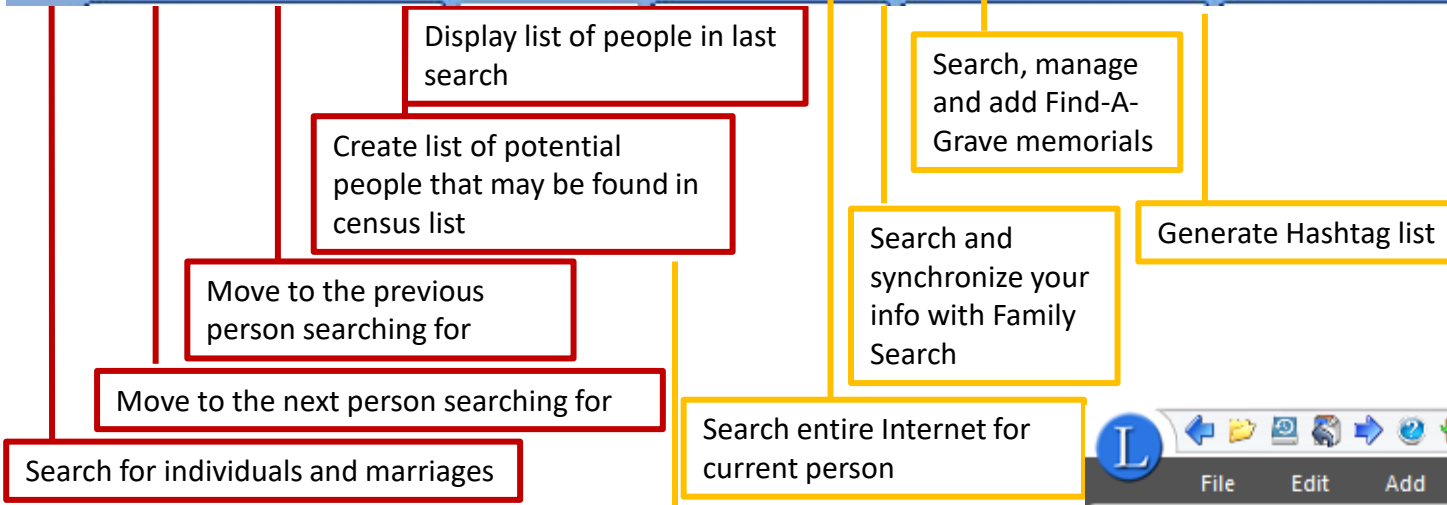
REPORTS TAB



TOOLS TAB



SEARCH
TAB



Display list of people in last search

Create list of potential people that may be found in census list

Move to the previous person searching for

Move to the next person searching for

Search for individuals and marriages

Search entire Internet for current person

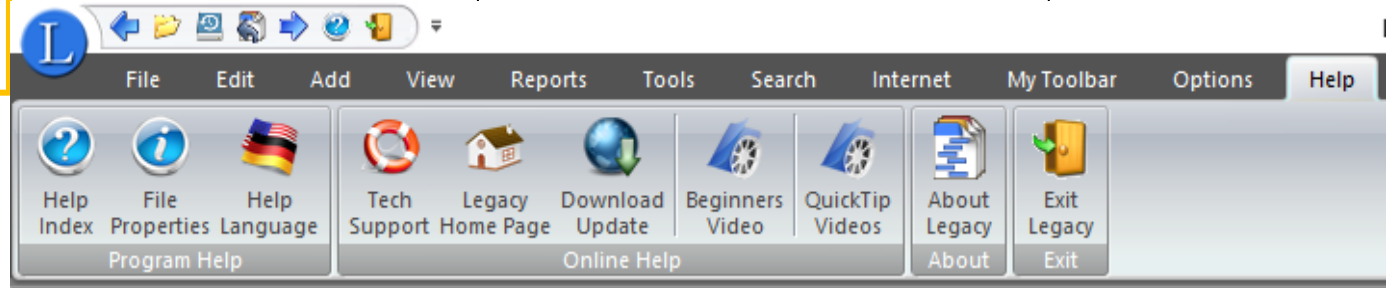
Search entire family file to replace text

Search, manage and add Find-A-Grave memorials

Search and synchronize your info with Family Search

Generate Hashtag list

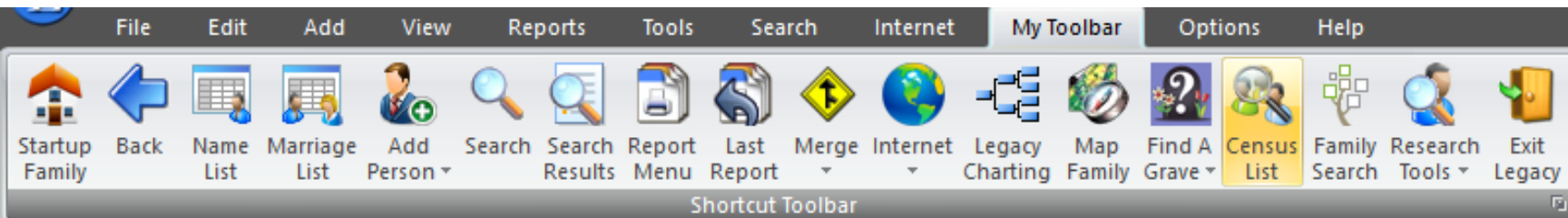
HELP TAB



INTERNET TAB




Create web pages in particular styles



MY TOOLBAR TAB

Customize the **My Toolbar** tab to show only the tools you want. There are 15 default tools shown when Legacy is first installed.

To customize:

1. Click on the small icon  in the lower-right corner of the **Shortcut Toolbar** group. You can also click the **Design** button in the upper-right corner of the ribbon and choose **Toolbars>My Toolbar**.
2. Add, remove, or move tools as desired.
3. Click **OK** when you are finished.



OPTIONS TAB

